

IEC Appliance Inlet C8 with Filter, Front Side Mounting



Snap-in mounting from front side

Screw-on mounting from front side



See below:  
[Approvals and Compliances](#)

**Description**

- Panel mount :  
Screw-on or snap-in mounting front side
- 2 Functions :  
Appliance Inlet Protection class II , Line filter in standard and medical version
- Solder / Quick Connect

**Characteristics**

- Compact high performance filter
- Suitable for use in medical equipment according to IEC/UL 60601-1 (1 MOOP, 1 MOPP)  
For applications according IEC/UL 62368-1 we recommend variants with bleed resistor

**Other versions on request**

- Standard version without X-capacitor
- Polarized C8 connector

**References**

Alternative: version without line filter [2576](#); [2578](#)

**Weblinks**

[pdf data sheet](#), [html datasheet](#), [General Product Information](#), [Approvals](#), [Distributor-Stock-Check](#), [Accessories](#), [Detailed request for product](#)

**Technical Data**

|                                 |   |
|---------------------------------|---|
| Ratings IEC                     | 0.5 - 2.5A @ Ta 40 °C / 250VAC; 50Hz                                      |
| Ratings UL/CSA                  | 0.5 - 6A @ Ta 40 °C / 250VAC; 60Hz  |
| Dielectric Strength             | > 1.7kVDC between L-N<br>> 4.5kVDC between L/N-PE<br>Test voltage (2 sec) |
| Impulse Withstand Voltage       | > 2.5kV between L-N   |
| Allowable Operation Temperature | -25 °C to 85 °C   |
| Climatic Category               | 25/085/21 acc. to IEC 60068-1   |
| IP-Protection                   | front side IP40 acc. to IEC 60529   |
| Protection Class                | Suitable for appliances with protection class II acc. to IEC 61140        |
| Terminal                        | Solder pin / quick connect terminals 6.3 x 0.8 / 4.8 x 0.8 mm             |
| Panel Thickness S               | Screw<br>Mounting screw torque max 0.5Nm<br>Snap-in 1 mm to 2.5 mm        |
| Material                        | Thermoplastic, black, UL 94V-0  |

|                         |   |
|-------------------------|---|
| Appliance inlet/-outlet | C8 acc. to IEC 60320-1<br>UL 498, CSA C22.2 no. 42 (for cold conditions) pin-temperature 70 °C, 2.5A, Protection Class II |
| Line Filter             | Standard and Medical Version, IEC 60939, UL 1283, CSA C22.2 no. 8<br><a href="#">Technical Details</a>                    |
| MTBF                    | > 6'700'000h acc. to MIL-HB-217 F   |

**Approvals and Compliances**



Detailed information on product approvals, code requirements, usage instructions and detailed test conditions can be looked up in [Details about Approvals](#)

SCHURTER products are designed for use in industrial environments. They have approvals from independent testing bodies according to national and international standards. Products with specific characteristics and requirements such as required in the automotive sector according to IATF 16949, medical technology according to ISO 13485 or in the aerospace industry can be offered exclusively with customer-specific, individual agreements by SCHURTER.

## Approvals









The approval mark is used by the testing authorities to certify compliance with the safety requirements placed on electronic products.

Approval Reference Type: 5008

| Approval Logo  | Certificates  | Certification Body | Description                  |
|--|---------------|--------------------|------------------------------|
|  | VDE Approvals | VDE                | Certificate Number: 40029278 |
|  | UL Approvals  | UL                 | UR File Number: E72928       |



## Product standards

Product standards that are referenced

| Organization   | Design                | Standard         | Description   |
|--|-----------------------|------------------|---|
|  | Designed according to | IEC 60320-1      | Appliance couplers for household and similar general purposes         |
|  | Designed according to | IEC 60939        | Passive filters for suppressing electromagnetic interference          |
|  | Designed according to | IEC 60127-6      | Miniature fuses. Part 6. Fuse-holders for miniature fuse-links        |
|  | Designed according to | IEC 61058-1      | Switches for appliances. Part 1. General requirements                 |
|  | Designed according to | UL 498           | Standard for Attachment Plugs and Receptacles                         |
|  | Designed according to | UL 1283          | Passive filters for suppressing electromagnetic interference          |
|  | Designed according to | CSA C22.2 no. 42 | General Use Receptacles, Attachment Plugs, and Similar Wiring Devices |
|  | Designed according to | CSA C22.2 no. 8  | Electromagnetic interference (EMI) filters                            |







## Application standards

Application standards where the product can be used

| Organization   | Design                         | Standard       | Description  |
|--|--------------------------------|----------------|--|
|  | Suitable for applications acc. | IEC/UL 62368-1 | Audio/video, information and communication technology equipment - Part 1: Safety requirements          |
|  | Suitable for applications acc. | IEC 60601-1    | Medical electrical equipment - Part 1: General requirements for basic safety and essential performance |

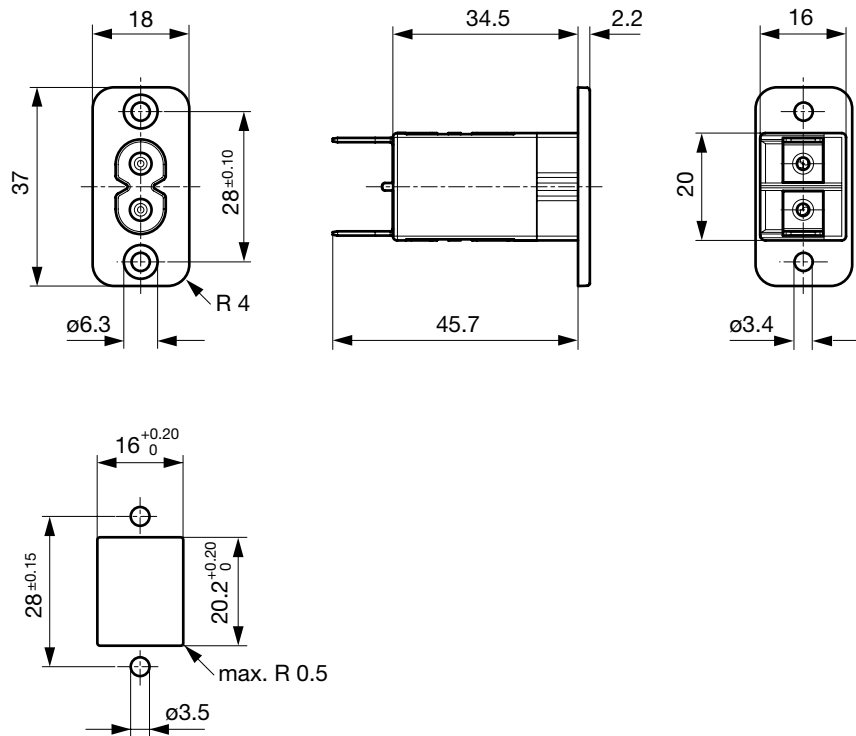
## Compliances

The product complies with following Guide Lines

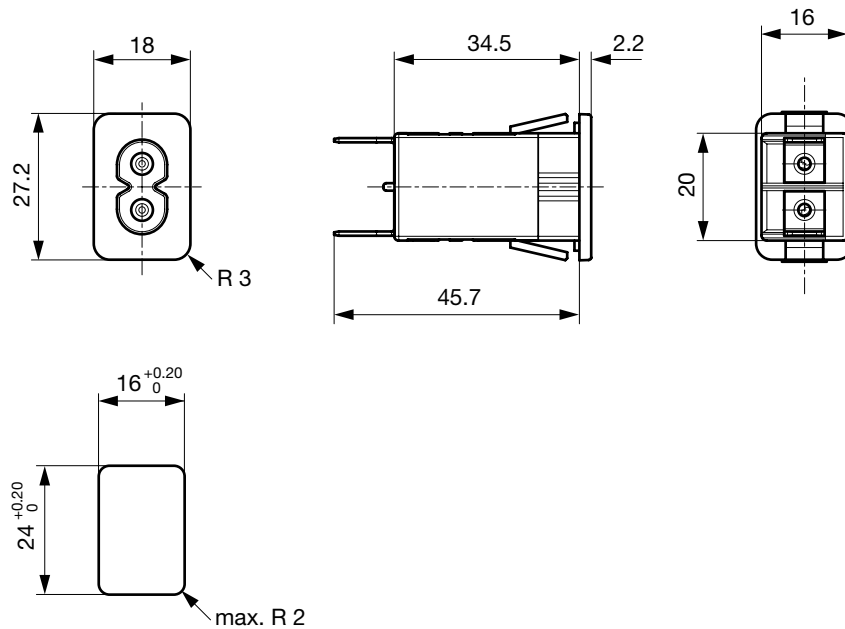
| Identification   | Details                        | Initiator   | Description   |
|--|--------------------------------|-------------|---|
|  | CE declaration of conformity   | SCHURTER AG | The CE marking declares that the product complies with the applicable requirements laid down in the harmonisation of Community legislation on its affixing in accordance with EU Regulation 765/2008. |
|  | UKCA declaration of conformity | SCHURTER AG | The UKCA marking declares that the product complies with the applicable requirements laid down in the British Amendment of Regulation (EC) 765/2008.  |
|  | RoHS                           | SCHURTER AG | Directive RoHS 2011/65/EU, Amendment (EU) 2015/863  |
|  | China RoHS                     | SCHURTER AG | The law SJ / T 11363-2006 (China RoHS) has been in force since 1 March 2007. It is similar to the EU directive RoHS.  |
|  | REACH                          | SCHURTER AG | On 1 June 2007, Regulation (EC) No 1907/2006 on the Registration, Evaluation, Authorization and Restriction of Chemicals 1 (abbreviated as "REACH") entered into force.                               |
|  | Medical Equipment              | SCHURTER AG | Suitable for use in medical equipment according to IEC/UL 60601-1 (1 MOOP, 1 MOPP)  |

**Dimension [mm]**

Screw-on mounting from front side



Snap-in mounting from front side

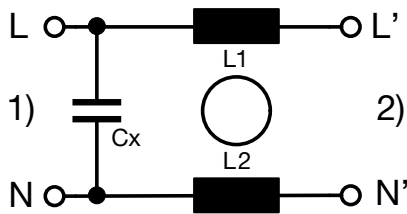


**Technical Data of Filter-Components**

| Rated Current [A] | Filter-Type          | Inductances L [mH] | Capacitance CX [nF] | Capacitance CY [nF] | R [MΩ] |
|-------------------|----------------------|--------------------|---------------------|---------------------|--------|
| 0.5               | Standard version     | 2 x 18             | 100                 | -                   | -      |
| 1                 | Standard version     | 2 x 8              | -                   | -                   | -      |
| 1                 | Standard version     | 2 x 8              | 100                 | -                   | -      |
| 2.5               | Standard version     | 2 x 1.2            | 100                 | -                   | -      |
| 4                 | Standard version     | 2 x 0.8            | 100                 | -                   | -      |
| 6                 | Standard version     | 2 x 0.3            | 100                 | -                   | -      |
| 0.5               | Medical Version (M5) | 2 x 18             | 100                 | -                   | 1      |
| 1                 | Medical Version (M5) | 2 x 8              | 100                 | -                   | 1      |
| 2.5               | Medical Version (M5) | 2 x 1.2            | 100                 | -                   | 1      |
| 4                 | Medical Version (M5) | 2 x 0.8            | 100                 | -                   | 1      |
| 6                 | Medical Version (M5) | 2 x 0.3            | 100                 | -                   | 1      |

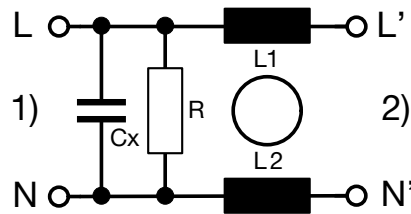
**Diagrams**

Standard version



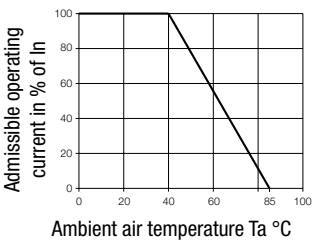
1) Line  
2) Load

Medical Version (M5)



1) Line  
2) Load

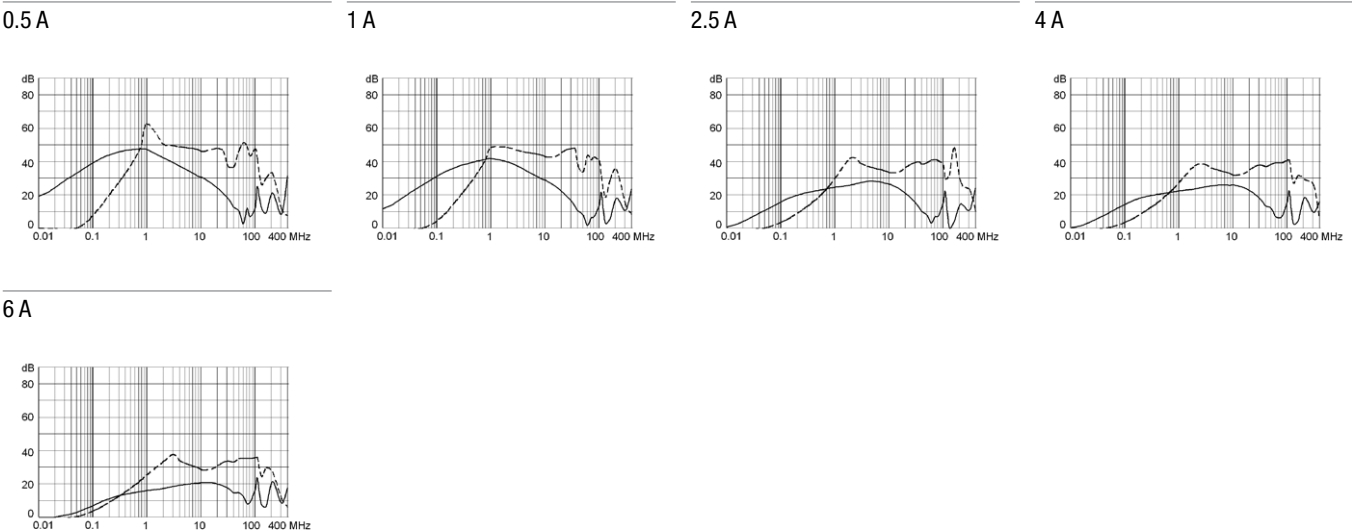
**Derating Curves**



**Attenuation Loss**

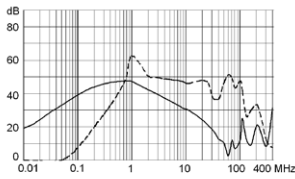
--- 50Ω differential mode    50Ω common mode

Standard version

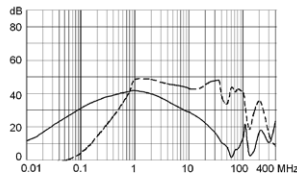


Medical version (M5)

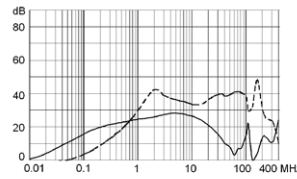
0.5 A



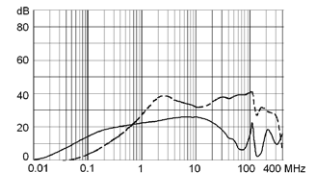
1 A



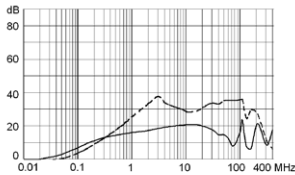
2.5 A



4 A



6 A



### All Variants

| Rated Current [A] | Filter-Type          | Mounting      | Terminal                            | Order Number |
|-------------------|----------------------|---------------|-------------------------------------|--------------|
| 0.5               | Standard version     | Snap-in 1.0mm | Quick connect terminal 4.8 x 0.8 mm | 5008.1010    |
| 0.5               | Standard version     | Snap-in 1.5mm | Quick connect terminal 4.8 x 0.8 mm | 5008.2010    |
| 1                 | Standard version     | Snap-in 1.5mm | Solder terminal                     | 5008.2021    |
| 1                 | Standard version     | Snap-in 1.5mm | Quick connect terminal 6.3 x 0.8 mm | 5008.2001    |
| 1                 | Standard version     | Snap-in 1.5mm | Quick connect terminal 4.8 x 0.8 mm | 5008.2211    |
| 1                 | Standard version     | Snap-in 2.0mm | Quick connect terminal 4.8 x 0.8 mm | 5008.3011    |
| 2.5               | Standard version     | Screw         | Solder terminal                     | 5008.0022    |
| 2.5               | Standard version     | Screw         | Quick connect terminal 6.3 x 0.8 mm | 5008.0002    |
| 2.5               | Standard version     | Screw         | Quick connect terminal 4.8 x 0.8 mm | 5008.0012    |
| 2.5               | Standard version     | Snap-in 1.0mm | Quick connect terminal 4.8 x 0.8 mm | 5008.1012    |
| 2.5               | Standard version     | Snap-in 1.5mm | Solder terminal                     | 5008.2022    |
| 2.5               | Standard version     | Snap-in 1.5mm | Quick connect terminal 4.8 x 0.8 mm | 5008.2012    |
| 2.5               | Standard version     | Snap-in 2.0mm | Solder terminal                     | 5008.3022    |
| 2.5               | Standard version     | Snap-in 2.0mm | Quick connect terminal 6.3 x 0.8 mm | 5008.3002    |
| 4                 | Standard version     | Snap-in 1.5mm | Quick connect terminal 4.8 x 0.8 mm | 5008.2014    |
| 6                 | Standard version     | Screw         | Quick connect terminal 6.3 x 0.8 mm | 5008.0006    |
| 6                 | Standard version     | Snap-in 1.0mm | Quick connect terminal 4.8 x 0.8 mm | 5008.1016    |
| 6                 | Standard version     | Snap-in 1.5mm | Quick connect terminal 4.8 x 0.8 mm | 5008.2016    |
| 0.5               | Medical Version (M5) | Snap-in 1.0mm | Quick connect terminal 4.8 x 0.8 mm | 5008.1110    |
| 1                 | Medical Version (M5) | Screw         | Quick connect terminal 4.8 x 0.8 mm | 5008.0111    |
| 1                 | Medical Version (M5) | Snap-in 1.0mm | Quick connect terminal 4.8 x 0.8 mm | 5008.1111    |
| 1                 | Medical Version (M5) | Snap-in 2.0mm | Quick connect terminal 4.8 x 0.8 mm | 5008.3111    |
| 2.5               | Medical Version (M5) | Snap-in 1.0mm | Quick connect terminal 4.8 x 0.8 mm | 5008.1112    |
| 2.5               | Medical Version (M5) | Snap-in 2.0mm | Quick connect terminal 6.3 x 0.8 mm | 5008.3102    |
| 4                 | Medical Version (M5) | Snap-in 1.0mm | Quick connect terminal 4.8 x 0.8 mm | 5008.1114    |
| 4                 | Medical Version (M5) | Snap-in 1.5mm | Quick connect terminal 4.8 x 0.8 mm | 5008.2114    |
| 6                 | Medical Version (M5) | Snap-in 1.0mm | Quick connect terminal 4.8 x 0.8 mm | 5008.1116    |
| 6                 | Medical Version (M5) | Snap-in 1.5mm | Quick connect terminal 4.8 x 0.8 mm | 5008.2116    |

Availability for all products can be searched real-time: <https://www.schurter.com/en/info-center/support-tools/stock-check-distributors>

Packaging unit

20 Pcs

**Mating Outlets/Connectors**

**Category / Description**

[Power Cord Overview complete](#)



|   |           |
|---|-----------|
| Cord Sets 2.5 A, IEC Connector, Black, 2.0 m, H03VVH2-F 2x0,75mm2, Connector IEC C7, H05VVH2-F 2x0.75 mm2 2m BLK, black | 6013.0474 |
| Cord Sets 2.5 A, IEC Connector, Black, 4.0 m, H03VVH2-F 2x0,75mm2, Connector IEC C7, H05VVH2-F2G0.75, black             | 6013.0478 |

[Power Supply Cord Overview complete](#)



|   |           |
|---|-----------|
| Cord Sets 2.5 A, North America, Black, 2.0 m, SVT 2x18AWG, Connector IEC C7, NISPT-2, black | 6010.5274 |
| Cord Sets 2.5 A, North America, Black, 4.0 m, SVT 2x18AWG, Connector IEC C7, NISPT-2, black | 6010.5278 |